



User's Manual
MV400 Series 3G Gateway



Important Notice

Due to the nature of wireless communications, transmission and reception of data can never be guaranteed. Data may be delayed, corrupted (i.e., have errors) or be totally lost. Although significant delays or losses of data are rare when wireless devices such as the Axesstel modem are used in a normal manner with a well-constructed network, the Axesstel modem should not be used in situations where failure to transmit or receive data could result in damage of any kind to the user or any other party, including but not limited to personal injury, death, or loss of property. Axesstel accepts no responsibility for damages of any kind resulting from delays or errors in data transmitted or received using the Axesstel modem, or for failure of the Axesstel modem to transmit or receive such data.

Safety and Hazards

Do not operate the Axesstel modem:

- In areas where blasting is in progress
- Where explosive atmospheres may be present
- Near medical equipment
- Near life support equipment, or any equipment that may be susceptible to any form of radio interference. In such areas, the Axesstel modem **MUST BE POWERED OFF**. The Axesstel modem can transmit signals that could interfere with this equipment.

Do not operate the Axesstel modem in any aircraft, whether the aircraft is on the ground or in flight. In aircraft, the Axesstel modem **MUST BE POWERED OFF**. When operating, the Axesstel modem can transmit signals that could interfere with various onboard systems.

Note: Some airlines may permit the use of cellular phones while the aircraft is on the ground and the door is open. The Axesstel modem may be used at this time.

The driver or operator of any vehicle should not operate the Axesstel modem while in control of a vehicle. Doing so will detract from the driver or operator's control and operation of that vehicle. In some states and provinces, operating such communications devices while in control of a vehicle is an offence.



Limitation of Liability

The information in this manual is subject to change without notice and does not represent a commitment on the part of Axesstel. AXESSTEL SPECIFICALLY DISCLAIMS LIABILITY FOR ANY AND ALL DIRECT, INDIRECT, SPECIAL, GENERAL, INCIDENTAL, CONSEQUENTIAL, PUNITIVE OR EXEMPLARY DAMAGES INCLUDING, BUT NOT LIMITED TO, LOSS OF PROFITS OR REVENUE OR ANTICIPATED PROFITS OR REVENUE ARISING OUT OF THE USE OR INABILITY TO USE ANY AXESSTEL PRODUCT, EVEN IF AXESSTEL HAS BEEN ADVISED OF THE POSSIBILITY OF SUCH DAMAGES OR THEY ARE FORESEEABLE OR FOR CLAIMS BY ANY THIRD PARTY.

Notwithstanding the foregoing, in no event shall Axesstel aggregate liability arising under or in connection with the Axesstel product, regardless of the number of events, occurrences, or claims giving rise to liability, be in excess of the price paid by the purchaser for the Axesstel product.



Table of Contents

1. Introduction	5
2. Product Overview	7
3. Knowing your Modem	10
Package Contents	10
Modem Interface	10
System Components	13
4. Connecting and Configuring your Modem	15
5. Using USB with your Modem	19
Connecting to Data Service with USB	23
Disconnect USB Connection	26
6. Connection using Ethernet (RJ45) Ports	27
Configuring Your PC	27
Configuring Ethernet Connection	29
7. AxessManager Operational Guide	31
Using the Main Window	31
Using the Menu Window	34
8. Web Manager User Interface	38
Basic Settings	40
Configuring the Wireless Network Settings	41
Router Setup	43
Configuring Port Forwarding	46
WAN Setup	48
9. Troubleshooting	51
10. Technical Specification	55
11. Glossary	56



Introduction

Thank you for purchasing the Axisstel MV400-series EV-DO Modem (the Modem). This user manual will help you setup, configure and outline best practices for maximizing your wireless home network performance with the Modem. Please be sure to read through this User Manual completely, and pay special attention to the section entitled “Placement of your Modem for Optimal Performance” on page 2.

Placement of your Modem for Optimal Performance

Your wireless connection will be stronger the closer your computer is to your Modem. Typical indoor operating range for wireless devices is between 100 and 200 feet. For EV-DO operation, a line-of-sight with the radio base station is preferred and yields the strongest signal strength.

In the same way, your wireless connection and performance will degrade somewhat as the distance between your Modem and connected devices increases, as well as between the Modem and the radio base station. This may or may not be noticeable to you. As you move farther from your Modem, connection speed may decrease. Factors that can weaken signals simply by getting in the way of your network’s radio waves are metal appliances or obstructions, and walls.

Note: While some of the items listed below can affect network performance, they will not prohibit your wireless network from functioning; if you are concerned that your network is not operating at its maximum effectiveness, this checklist may help.

1. Modem Placement

Place your Modem, the central connection point of your network, as close as possible to windows or in rooms at the outer side of your house. If you also use the Wi-Fi feature of the Modem, it should be placed near the center of your wireless network devices.

To achieve the best wireless network coverage:

- Ensure that your Modem’s networking antennas are parallel to each other, and are positioned vertically (toward the ceiling). If your Modem itself is positioned vertically, point the antennas as much as possible in an



upward direction.

- In multistory homes, place the Modem on an upper floor.
- Try not to place the Modem near a cordless phone.

2. Avoid Obstacles and Interference

Avoid placing your Modem near devices that may emit radio “noise,” such as microwave ovens. Dense objects that can inhibit wireless communication include:

- Refrigerators
- Washers and/or dryers
- Metal cabinets
- Large aquariums
- Metallic-based, UV-tinted windows

If your wireless signal seems weak in some spots, try to move the Modem to another location while observing the signal strength indicator. Since you may not know the location of an EV-DO radio base station serving your Modem, try to call your service provider and ask for the nearest base station of your home. Try placing the Modem closest and unobstructed to that base station.

3. Cordless Phones

If the performance of your wireless network is impaired after attending to the above issues, and you have a cordless phone:

- Try moving cordless phones away from the Modem and your wireless-enabled computers.
- Unplug and remove the battery from any cordless phone that operates on the 2.4GHz band (check the manufacturer’s information). If this fixes the problem, your phone may be interfering.
- If your phone supports channel selection, change the channel on the phone to the farthest channel from your wireless network. For example, change the phone to channel 1 and move your Modem to channel 11. See your phone’s user manual for detailed instructions.
- If necessary, consider switching to a 900MHz cordless phone.



Product Overview

In minutes you will be able to connect your computers to the Internet, share your Internet connection and network your computers. The following is a list of features that make your new Axisstel EV-DO Modem an ideal solution for your home or small office network. Implementation of these features depends on the particular service provider and account features you have chosen.

Some features described in this manual may not be supported by your service provider or may not be available with your network account. For details of the services and accounts available, contact your service provider.

CDMA 3G services

The Modem operates over the CDMA 3G technology that provides a variety of connectivity features, depending on your service provider and account:

- 1xEVDO Rev. A supports Internet connections with data rates up to 3.1 Mbps (downlink from the network) and 1.8 Mbps (uplink to the network). Average data rates are roughly 600–1300 Kbps (downlink from the network) and 300–400 Kbps (uplink to the network). Actual speed depends on the network conditions.
- 1xEVDO Rev. 0 supports Internet connections with data rates up to 2.4 Mbps (downlink from the network) and 153 Kbps (uplink to the network). Average data rates are roughly 400–700 Kbps (downlink from the network) and 40–80 Kbps (uplink to the network). Actual speed depends on the network conditions.
- 1X supports Internet connections with data rates up to 153 Kbps. Actual speed depends on the network conditions.

Once the connection is established, you can open your browser and connect to any web site that is accessible through the Internet, or access other Internet services (such as email).

The connection is “active” when data transmission is occurring. If data transmission stops for a period of time (determined by the network), the connection becomes “dormant”; see page 26.



Plug-and-Play

Each Modem has been provisioned at the factory for use with a particular service provider. This sets the Modem to use particular radio channels and enables services specific for that provider. Although the Modem comes with drivers and enabling software, you don't have to install and use them if you simply want to connect to the Internet, assuming that your Modem has been activated with the network (The process of setting up your account is called activation. Activation involves action by the service provider and configuration of the Modem.)

Once the Modem has been activated, simply connect your computer with the Modem using the provided Ethernet (RJ-45) cable and you are ready to use the Internet. If you choose to install the driver and its enabling software (the AxBossManager), you will have more controls of the Modem performances and settings.

Works with Both PCs and Mac® Computers

The Modem supports a variety of networking environments including Mac OS® 9.x, X v10.x, AppleTalk®, Linux®, Windows® 98, Me, NT®, 2000, and XP, and others. All that is needed is an Internet browser and a network adapter that supports TCP/IP (the standard language of the Internet).

Top-View LED Display

Lighted LEDs on the top of the Modem indicate which functions are in operation. You'll know at-a-glance whether your Modem is in EV-DO or 1X mode, connected to the Internet, and in Wi-Fi or Ethernet operation. This feature eliminates the need for advanced software and status-monitoring procedures.

Web-Based Advanced User Interface

You can set up the Modem's advanced functions easily through your AxBossManager web browser, without having to install additional software onto the computer. There are no disks to install or keep track of and, best of all, you can make changes and perform setup functions from any computer on the network quickly and easily.

NAT IP Address Sharing

Your Modem employs Network Address Translation (NAT) to share the single IP address assigned to you by your Internet Service Provider while saving the cost of adding IP addresses to your Internet service account.



Integrated 10/100 4-Port Switch

The Modem has a built-in, 4-port network switch to allow your wired computers to share printers, data and MP3 files, digital photos, and much more. The switch features automatic detection so it will adjust to the speed of connected devices. The switch will transfer data between computers and the Internet simultaneously without interrupting or consuming resources.

Support for VPN Pass-Through

If you connect to your office network from home using a VPN connection, your Modem will allow your VPN-equipped computer to pass through the Modem and to your office network.

Built-In Dynamic Host Configuration Protocol (DHCP)

Built-In Dynamic Host Configuration Protocol (DHCP) on-board makes for the easiest possible connection of a network. The DHCP server will assign IP addresses to each computer automatically so there is no need for a complicated networking setup.

Integrated 802.11g Wireless Access Point

802.11g is an exciting new wireless technology that achieves data rates up to 54Mbps, nearly five times faster than 802.11b.

MAC Address Filtering

For added security, you can set up a list of MAC addresses (unique client identifiers) that are allowed access to your network. Every computer has its own MAC address. Simply enter these MAC addresses into a list using the Web-Based Advanced User Interface and you can control access to your network.



Knowing your Modem

Packages Contents

- EV-DO Modem
- User Manual
- Software CD with User Manual
- RJ45 Ethernet Networking Cable
- USB Cable
- Power Supply and Battery

Modem Interfaces

The Modem has been designed to be placed on a desktop or wall mounted. All of the cables exit from the front of the Modem for better organization and utility. The LED indicators are easily visible on the top of the Modem to provide you with information about network activity and status.



1. Power LED

OFF	Modem is OFF
Solid Green	Battery connected & fully charged
Solid Orange	Battery connected & half charged
Solid Red	Battery connected & low
Blinking Red	Battery connected & charging error

2. Signal Strength LED

This LED indicates the signal strength of the EV-DO network serving your Modem.



OFF	No EV-DO signal
Solid Green	Strongest level
Solid Orange	Medium level
Solid Red	Low signal

3. Connect LED

This LED informs you that the Modem is connected to a wireless network and passed through the user/password validation.

OFF	Modem is not connected to network
Solid Green	Modem is connected to network

4. 1x/EV-DO LED

This LED informs you that the Modem is tuned to a 1x or EV-DO wireless network. Normally your Modem is programmed to search and use EV-DO network. If unavailable, the Modem will try to search for a 1x network. Please check with your Service Provider for default setting.

OFF	1x
Solid Green	EV-DO

5. Ethernet LED

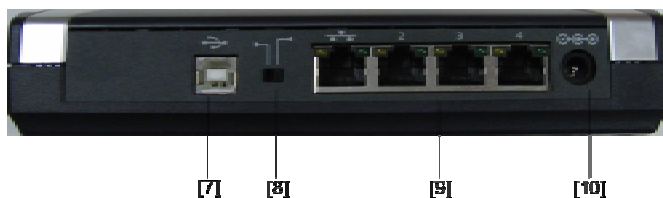
This LED indicates that there are computers connecting to your Modem via one of the RJ-45 ports. When the LED is blinking, it indicates that there are activities (data passed through).

OFF	No RJ-45 (Ethernet) connection
Solid Green	At least one of the RJ-45 ports in use
Blinking Green	Active data passed through the ports

6. Wi-Fi LED

This LED indicates that your Modem is setup to have Wi-Fi capability. When the LED is blinking, it indicates that there are activities (data passed through).

OFF	No Wi-Fi
Solid Green	Wi-Fi network within Modem is activated
Blinking Green	Active data passed through Wi-Fi



7. USB Connection to Computers

Connect your wired (non-wireless) computer to this port using the supplied USB cable.

8. USB/RJ-45 Switch

This switch allows your Modem to connect with your computer via either USB port or RJ-45 ports.

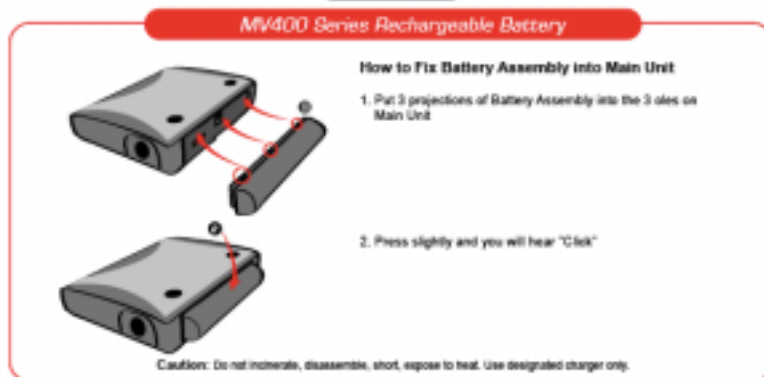
9. Connections to Computers (Wired Computer Ports)

Connect your wired (non-wireless) computers to these ports. These ports are RJ45, 10/100 auto-negotiation, auto up-linking ports for standard UTP category 5 or 6 Ethernet cable. The ports are labeled 1 through 4.

10. Power Jack

Connect the included 5V DC power supply to this jack.

11. Rechargeable Battery





System components

Your Modem is just one part of a system designed to provide you with a wide range of communication features. Every component of the system is needed to enable these capabilities.

Your host computing device

Your notebook or PC hosts the Modem and runs the communication software: your web browser or email application and Connection Manager—the Modem enabling software.

You may also have other software on your computer that can be used wirelessly with the Modem, such as: file transfer applications (FTP), chat or instant messaging, a VPN (Virtual Private Network) client, client software for a corporate server application.

The Modem

The Modem provides your computer with a connection to the CDMA wireless network. Every CDMA network operates on one of three radio frequency bands (450MHz, 800MHz and 1900MHz). The Modem is available in four configurations: MV410 single-band 450MHz Modem, MV420 single band 800MHz, MV430 single-band 1900MHz and dual-band 800/1900MHz Modem.

The Modem drivers and enabling software

Required to control, monitor, and manage your wireless connections, this includes the AxessManager application and USB device driver.

The Modem comes with a CD containing this software:

- AxessManager application that you use to manage the Modem and monitor your connections
- The USB device driver software that enables the Modem to work with your computer's operating system.

The USB driver and application software must be installed before you insert the Modem for the first time if you choose to connect the Modem with your PC USB port. AxessManager application is optional: you can install it at anytime or not installing it altogether. Detailed instructions are provided in the following chapters.



A CDMA service provider account

Companies that operate CDMA networks and provide access to these networks are called service providers. To use the Modem, you must have an account with a CDMA service provider.

Each service provider has its own pricing options. There may be flat rate accounts, which provide you a maximum number of minutes of network usage for a fixed monthly fee. There may be accounts for which you are charged for network usage by the minute or by the amount of data transmitted.

Your account may include a variety of other services such as SMS messaging.

Each Modem has been provisioned at the factory for use with a particular service provider. This sets the Modem to use particular radio channels and enables services specific for that provider.

The process of setting up your account is called activation. Activation involves action by the service provider and configuration of the Modem.

The CDMA wireless network

This is the worldwide infrastructure providing the radio coverage that allows you to stay connected. Made up of radio towers and a variety of network switches, routers, and servers, the network is an interconnection of many service providers.

Note: More information about CDMA networks is available on the CDMA Development Group web site, www.cdg.org.

There are CDMA networks that operate in the frequency bands supported by the Modem throughout North America and parts of Latin America, Asia, and New Zealand. However, each service provider operates a network that covers a limited geographical area within the overall CDMA coverage area.

Note: Some service providers have coverage maps on their web sites.



Connecting and Configuring your Modem

Each Modem has been provisioned at the factory for use with a particular service provider. This sets the Modem to use particular radio channels and enables services specific for that provider.

Although the Modem comes with drivers and enabling software, you don't have to install and use them if you simply want to connect to the Internet through the Ethernet (RJ-45) ports, assuming that your Modem has been activated with the network

Once the Modem has been activated, simply connect your computer with the Modem using the provided Ethernet (RJ-45) cable and you are ready to use the Internet. Therefore installing the AxessManager software is optional.

If you choose to install the drivers and its enabling software (the AxessManager), you will have more controls of the Modem performances and settings. You will also have access to more advance features of the Modem such as Wi-Fi configuration, USB connection and password management.

This chapter provides the step-by-step process to install the AxessManager connectivity software.

Install Software

Axesstel has provided our Install software to make installing your Modem a simple and easy task. You can use it to get your Modem up and running in minutes. The Install software requires that your Windows Me, 2000, or XP computer be connected directly to your Modem.

IMPORTANT: Run the Install software from the computer that is going to be the main connection with the Modem.

DO NOT CONNECT THE MODEM AT THIS TIME.

Step 1 | Run the Install Software

- 1.1. Shut down any programs that are running on your computer at this time.
- 1.2. Make sure you have the following items at the computer that is going to be the main connection with the Modem. **DO NOT CONNECT THE MODEM AT THIS TIME.**



- Quick Installation Guide
 - The Install Software CD with User Manual
 - The Modem
 - The Modem's Power Supply
 - RJ45 Ethernet Networking Cable
- 1.3 Turn off any firewall or Internet-connection-sharing software on your computer.
 - 1.4 Insert the Install software CD into your CD-ROM drive. The Installation screen will automatically appear on your screen within 15 seconds. If it does not, select your CD-ROM drive from "My Computer" and double-click on the file named "EasyInstall.exe" on the CD-ROM.

Step 2 | Set up the Hardware

- 2.1. Make sure your Modem is not connected to any power source and all the LED are OFF.
- 2.2 Locate the CAT-5 Ethernet cable that is included with your Modem. Plug one end of this cable into ANY one of the Ethernet ports on your Modem. Plug the other end of the cable into the networking port on your computer.
- 2.3 Locate the power supply that is included with your Modem. Plug the power supply's small connector into the power port on the Modem. Plug the power supply into an empty power outlet.
- 2.4 Switch on the Modem. Look at the Power LED on top of the Modem and make sure the lights are ON.
- 2.5 Wait for a few seconds for the Modem to search for service network. Once the Modem finds a suitable network, observe the Signal LED turns to Red, Orange or Green depending on the strength of acquired signal. Refer to the Signal Strength LED description for more details.

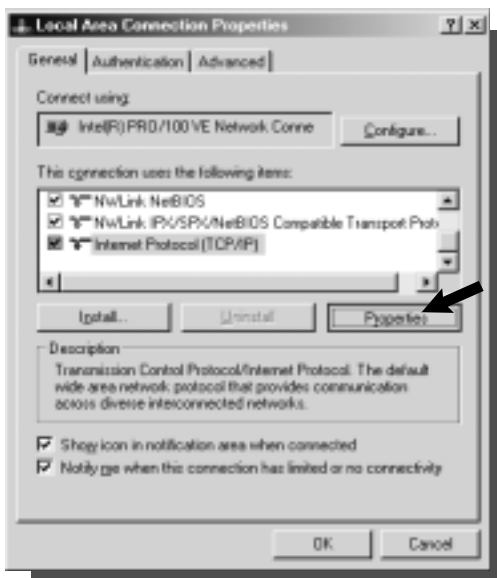
Step 3 | Preparing your PC

Your Modem's Ethernet is configured with DHCP by default. This means that IP address of your PC is automatically assigned by the Modem. Make sure that your PC has the correct TCP/IP setting for its "Local Area Connection" by following the steps below.



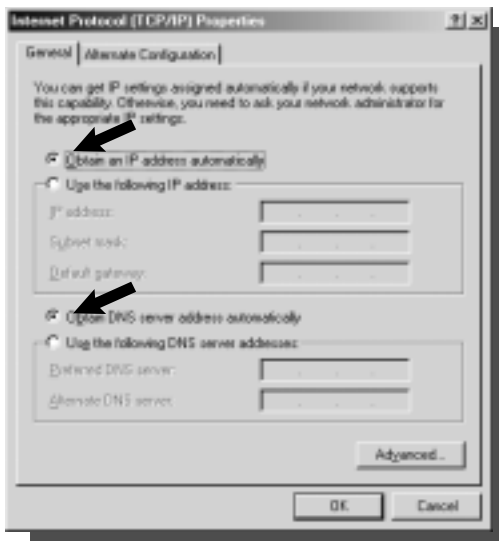
3.1 Click "Start", select "Connect To" and scroll down to "Show all connections" and left click it.

3.2 Right click "Local Area Connection" scroll down to "Properties" and left click it



3.3 Select the "Internet Protocol (TCP/IP)". Press the "Properties" button.

If there is no TCP/IP line listed, you will need to install TCP/IP first.



3.4 Check “Obtain an IP address automatically”

3.5 Check “Obtain DNS Server address automatically”

3.6 Click Ok to exit Properties

3.7 If asked to re-start the PC, click “YES”.



Using USB with your Modem

The Modem has one USB Type B port to provide connectivity for computers equipped with USB. If you choose to use the USB with your Modem, you first need to install the provided USB device driver into your computer.

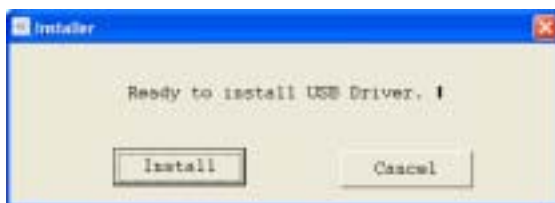
This chapter provides the step-by-step process to install the USB device driver.

IMPORTANT: Run the USB device driver installation from the computer that is going to be the main connection with the Modem.

DO NOT CONNECT THE MODEM AT THIS TIME.

Step 1 | Run the Setup Software

- 1.1. Shut down any programs that are running on your computer at this time.
- 1.2. Make sure you have the following items at the computer that is going to be the main connection with the Modem. **DO NOT CONNECT THE MODEM AT THIS TIME.**
 - Quick Installation Guide
 - The Install Software CD with User Manual
 - The Modem
 - The Modem's Power Supply
 - USB Cable
- 1.3. Insert the Install software CD into your CD-ROM drive. Locate the folder "Driver". You will see two subfolders: "Install 32" and "Install 64". For PC with Duo Core (or Core 2 Duo) CPU, use "Install 64". Otherwise use "Install 32".
- 1.4. Press "MSP_Install.exe". The following screen will appear. Select "Install".





1.5 Click “OK”.



Step 2 | Connecting the Modem to your PC

- 2.1. Turn off both the EV-DO modem and your PC.
- 2.2. Connect the included USB Cable to the USB port on your PC.
- 2.3. The Modem cable select switch, located between Ethernet and USB connectors, should be set to USB.
- 2.4. Connect other end of the USB Cable to USB port on the Modem.
- 2.5. Connect the included Power Adapter to Power connector of EV-DO modem.
- 2.6. Connect the other end of Power Adapter to an electrical outlet.
- 2.7. Power on EV-DO modem.





Step 3 | Window Device Setup

3.1 Power ON the PC. After the boot-up process, you will see “Found New Hardware” screen appears. Select Next to install USB



3.2 Select “Continue Anyway”.



3.3 Press “Finish” to complete the process.





3.4 **Axesstel Diagnostic Port** will be detected on your PC. Select Next to install.



3.5 Select “Continue Anyway”.



3.6 Press “Finish” to complete the process.

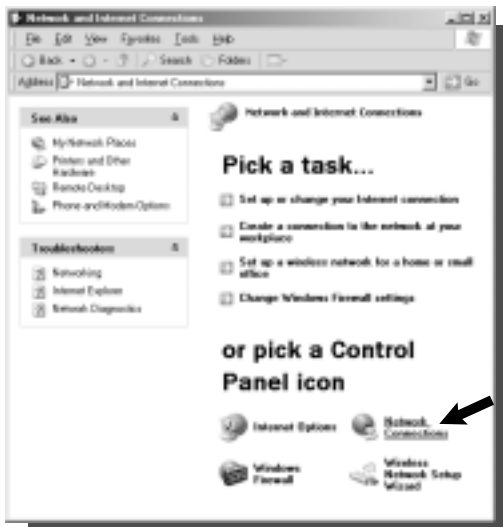




Connecting to Data Service with USB connection

After USB driver has been installed, use the following steps to connect the Modem to the 1xEV-DO network.

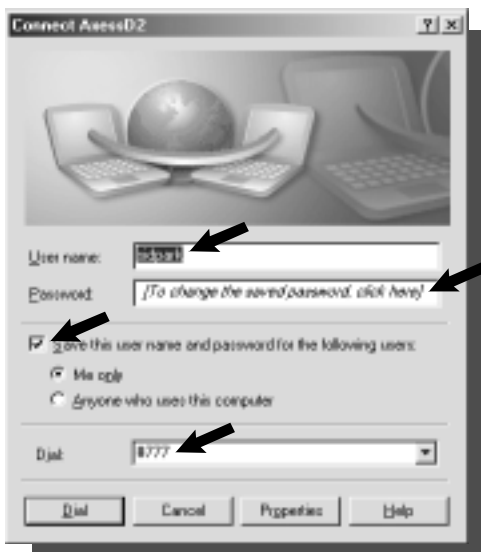
1. Open Network Connections from the Start Menu or Control Panel.



2. Double click "AxessD2" connection item.

Make sure that the modem associated with the connection is "Axesstel USB CDC 3100"



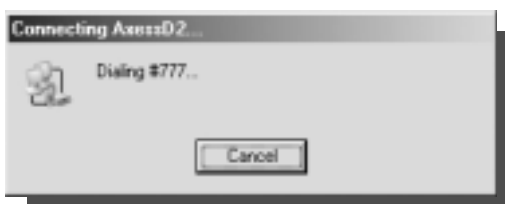


3. Enter User name and Password.
 - Check “Save this user...”if you do not wish to enter the user name and password every time you use the Modem.
4. On you first use, press “Properties” button to check if all settings are OK
5. Make sure to enter the dial number as well.
 - This number may differ from one service provider to another.



6. Check that the correct modem is selected.
7. Check “Show icon in notification area when connected”

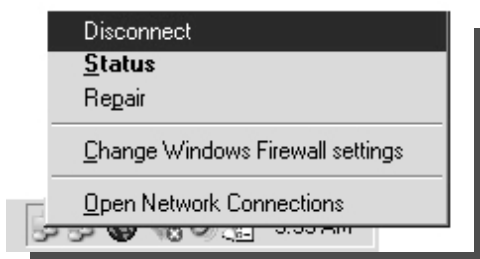
If a wrong modem is select, the connection attempt will fail.



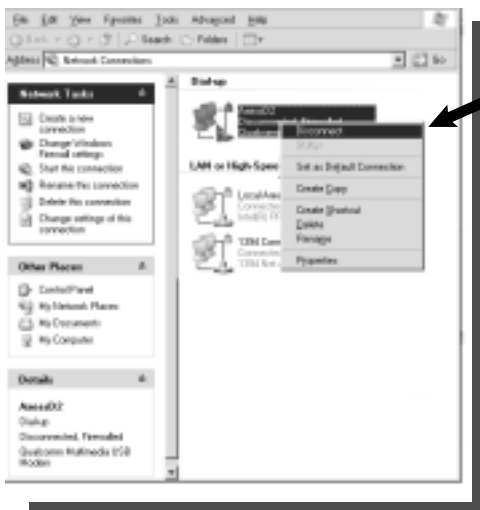
8. Your PC is trying to connect to the EV-DO network.

* If the connection failed, check each step of this section and try again.

Disconnect USB connection



1. To disconnect the EV-DO connection, select “Disconnect” from the Tray Icon area.



2. If the tray icon is not visible, open the “Network Connections” and select the “AccessD2” connection item.

3. Right click on the icon and select “Disconnect”.



Connection Using Ethernet (RJ45) Ports

Although the Modem comes with drivers and enabling software, you don't have to install and use them if you simply want to connect to the Internet through the Ethernet (RJ-45) ports, assuming that your Modem has been activated with the network

Once the Modem has been activated, simply connect your computer with the Modem using the provided Ethernet (RJ-45) cable and you are ready to use the Internet.

Configuring Your PC

The Modem's Ethernet is configured with DHCP by default. This means that IP address of your PC is automatically assigned by the EV-DO Modem. If for some reasons, the PC's cannot get IP address and cannot make connection to Internet, use the following steps to check the TCP/IP setting of your "Local Area Connection".



1. Click the Start button, select Settings, and select Control Panel. Click on "Network and Internet Connection" icon.

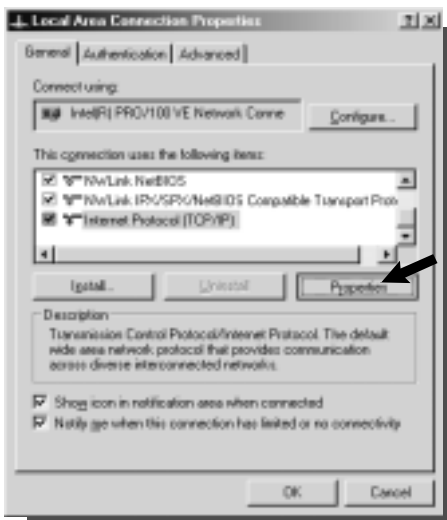
NOTE: DHCP stands for Dynamic Host Configuration Protocol. Your Modem has a built-in DHCP server. The DHCP server will automatically assign an IP address to the computers on the LAN. Be sure to set each client PC's TCP/IP settings to "obtain an IP address automatically".



- 2 Double-click on “Network Connection”.



- 3 Go to Local Area Connection Properties.



- 4 Select the “Internet protocol (TCP/IP)”. If there is no TCP/IP line listed, you will need to install TCP/IP first.
- 5 Press the “Properties” button.



- 6 Check “Obtain an IP address automatically”.
- 7 Check “Obtain DNS Server address automatically”.
- 8 Click OK to exit Properties
- 9 If asked to re-start the PC, click “YES”.

Configuring Ethernet Connection

Your EV-DO Modem provides an embedded Web-based Management Utility to help you configure it using your Web Browser. Follow these steps to configure your Modem’s Ethernet connection.



1. Open your Web browser and enter 192.168.0.1 in the address bar

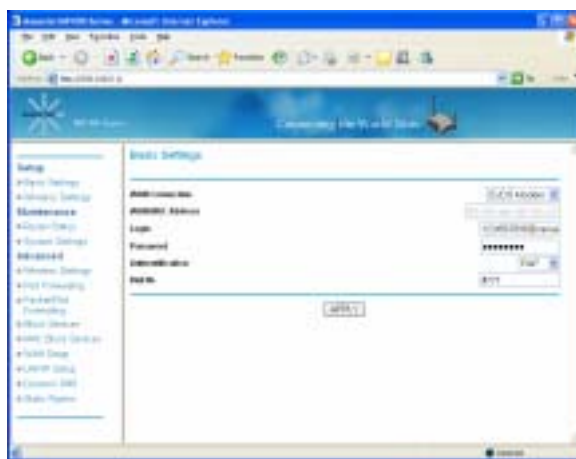


2. A pop-up window will appear. When prompt for User name and password, enter the following user id and password.

User ID: admin
Password: admin

* If you have changed the user name and the password, enter the new user name and password.

After entering the correct userid and password, the pop up window will change to a web-based window.



Follow the steps in the chapter “Web Manager User Interface”, “Step 2 Navigate web-based UI”, page 39 to complete the Modem’s Ethernet and Wi-Fi settings.

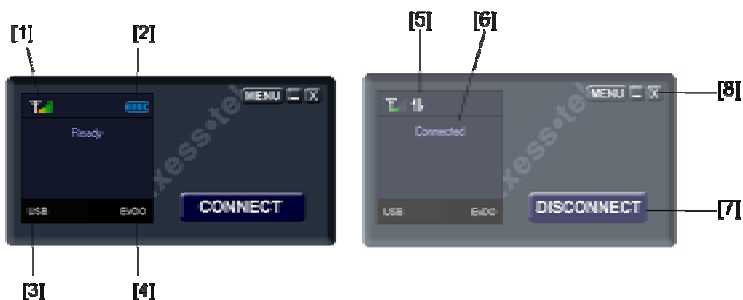


AxessManager Operational Guide

AxessManager is a SW utility that allows the administration of your Modem. One computer at a time can log into the Modem via AxessManager for the purposes of making changes to the settings of the Modem. Once a user has logged in to make changes, all other computers connected to the Modem inherit the same settings. For example, if the Modem is set to use only 1X packet data, all connections to the network through the Modem RJ-45 ports or Wi-Fi will be 1X.

Using the Main Window User Interface

The Main window is the first page you will see when you access the AxessManager User Interface (UI). The Main window shows you a quick view of the Modem's status and settings. All advanced setup pages can be reached from this page.



1. Signal Strength Icon

This icon indicates the signal strength of the EV-DO network serving your Modem. The range below applied to EV-DO signal only.

OFF	No Modem connected to computer
Antenna only- Red	Modem connected but no service
Antenna only-White	Weak signal (< -111 dBm)
Antenna + 1 bar	Low signal ($-111 \leq \text{sig.} < -103$ dBm)
Antenna + 2 bars	Medium-Low ($-103 \leq \text{sig.} < -98$ dBm)
Antenna + 3 bars	Medium signal ($-98 \leq \text{sig.} < -93$ dBm)
Antenna + 4 bars	Medium-high ($93 \leq \text{sig.} < -88$ dBm)
Antenna + 5 bars	Strongest signal (≥ -88 dBm)



2. Battery Icon

OFF	No battery
Blinking red	Battery error or very low
Blue empty battery	Battery low level
Blue with 1 bar	Battery level 25%
Blue with 2 bars	Battery level 50%
Blue with 3 bars	Battery level 75%
Blue with 4 bars	Battery level close to 100%
Progressing 1- 4 bars	Battery is charging

3. Network Connection Icon

This icon shows the wired network connection mode of your Modem. Only one mode can be used at a time.

OFF	No computers connected to Modem
Ethernet	RJ-45 port or Wi-Fi is in use
USB	USB port is in use
COM	COM port is in use

Note that there is a USB/Ethernet switch in the front of the Modem to select which preferred mode for your connected computers. The COM mode can only be activated from the "Menu" window.

4. Air Interface Icon

This icon informs you that the Modem is tuned to a 1x or EV-DO wireless network. By default your Modem is programmed to search and use EV-DO network. If unavailable, the Modem will try to search for a 1x network.

OFF	No network available, no service
EV-DO	EV-DO network is available
1xRTT	1X network is available

5. Activity Icon

This icon indicates data activity between your Modem and the network.

OFF	No data activity
Blinking arrows	Data passing through your Modem
Steady arrows	Modem is in connect or dormant state



6. Info Text Messages

There are various Info messages displayed in this window. These messages inform you various statuses of your Modem.

No Device	No devices connected to Modem
Searching...	Your Modem is searching EV-DO or 1X networks for services
No Service	Your Modem cannot detect any network after search completed
Ready	Your Modem is ready for network connection
Device Detected	
Connected	Your Modem is connected to the network
Connected (Dormant)	Your Modem is connected to the network but is inactive
Battery Low	
Battery Error	

7. Connect/Disconnect Button

This button allows you to connect or disconnect your Modem to the network. It will toggle between two states Connect and Disconnect. The Disconnect button appears only when your Modem is currently in the Connected or Connected (Dormant) modes. This allows you to turn off the sessions by disconnecting your Modem from the service network. In all other Modem modes, the Connect button will appear. Note that although the Connect button appears, the Info Text message must show "Ready" before you can connect to the network.

8. Menu/X/- Buttons

The Menu button gives you access to additional advanced Modem setting and configuration such as Network Setup, Options and Status selection. The X button exits AxxessManager utility. Note that exiting the utility does not mean turning off your Modem. For example, if you exit the utility while the Modem is in Connected or Connected (Dormant) mode, other computers can be plugged in one of the ports and use the service. The - button allows you to minimize AxxessManager utility into Window tray.



Using the Menu Window

The Menu window is the main Interface that gives you access to more advanced settings of your Modem. The Menu window is a stand-alone, pop-up window that appears after you click the Menu button in the AxessManager main window. Once you enter the Menu window, navigating to different tabs may result in subsequent window pop-up to allow different configurations and settings of your Modem. In the sections below, you will see each tab's functionality and operation.

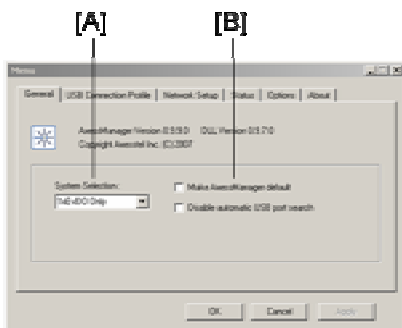


1. About Tab

This tab informs you the basic details of your Modem. There are no further actions needed in this tab. There is a slight difference in appearance when your Modem is configured with Ethernet setting. When it occurs, About tab also informs you the SW version of the Linux SW used to handle the Ethernet function.

2. General Tab

This tab allows you to specify the system selection of your Modem. It also let you choose the COM port setting.





A. System Selection

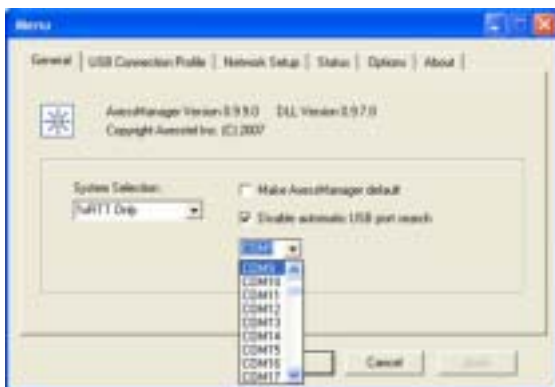
This drop down menu lets you specify the wireless network that your Modem will scan and seek service from. There are 4 modes for which your Modem can operate:

- EV-DO only
- EV-DO and 1xRTT
- 1xRTT only
- Not available

Note that EV-DO allows broadband high speed (up to 3.1 Mbps) while 1xRTT only supports up to 153 kbps. The default setting of your Modem is set by your service provider and is normally "EV-DO and 1xRTT". In this case, your Modem will attempt to get service first in EV-DO mode. If EV-DO is unavailable then it will automatically switch to 1xRTT. We recommend you leave this setting as set by your service provider.

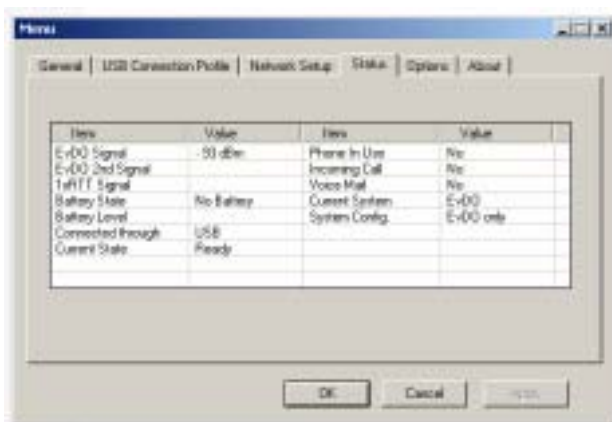
B. Disable Automatic USB Port Search

This check lets you disable the automatic COM port assignment to use for your computer USB and COM connections with the Modem. If selected, a drop down menu with a list of available COM ports will appear and you will need to specify the port number from that list.



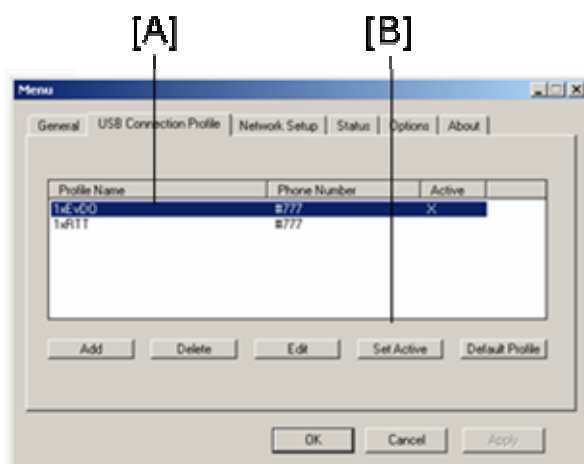
3. Status Tab

This tab shows you various performance statuses of your Modem. There are no further actions needed in this tab.



4. USB Connection Profile Tab

This tab lets you define and manage the USB connection of your Modem. You only have to specify items in this tab if you choose to connect and operate your computer with the Modem via the USB port. Note that there is only one USB port on the Modem hence there is only one single user who can use the Modem in this mode. In normal operation, there are two USB connection profiles predefined: one for EV-DO connection and one for 1xRTT connections. These two profiles are included in the Install CD and downloaded to your PC during the installation process.





A. Profile List

This window contains all the USB connection profiles previously defined in the computer currently in use to connect with the Modem and indicates which profile is active. Note that this list is stored in the computer and not in the Modem, hence any changes you make in the profiles are only stored locally. If you have more than one PC and intent to use the USB connection with the Modem (not simultaneously) you will need to make the same changes in each PC.

B. Add/Delete/Edit Profile

These buttons allows you to manage all USB connection profiles previously defined in the computer.

To add a new profile, simply click the "Add" button. A secondary pop up window will appear and ask you to enter all parameters associated with the new connection. These parameters are:

- Profile Name
- User Id
- Password
- Dialed Number

Since these parameters are sent over the air to the network serving your Modem, we advise you to contact your Service Provider before attempting this step.

To delete an existing profile, first highlight it by clicking the profile name in the list then hit the "Delete" button.

To modify some settings of an existing profile, highlight it in the profile list then click the "Edit" button. A secondary pop up window similar to the "Add" pop up window will appear. This window is populated with existing parameter values. You simply change the appropriate parameter as needed. Again, we advise you to contact your Service Provider before attempting this step.



Web Manager User Interface

The Web Manager User Interface is a web-based tool that you can use to set up the Modem if you don't want to use the default setting of Install CD. You can also use it to manage advanced functions of the Modem. From the User Interface, you can perform the following tasks:

- View the Modem's current settings and status
- Configure the Modem's router function to connect to your Service Provider with the settings that they provided you
- Change the current network settings such as the Internal IP address, the IP address pool, DHCP settings, and more
- Set the Modem's firewall to work with specific applications (port forwarding)
- Set up security features such as client restrictions, MAC address filtering, WEP, and WPA
- Enable the DMZ feature for a single computer on your network
- Change the Modem's internal password
- Reboot the Modem
- Back up your configuration settings
- Reset the Modem's default settings
- Update the Modem's firmware

Before you use the Advanced User Interface, you will need to have a **User Name** and **Password** of the Modem. Please contact your Service Provider to obtain them.

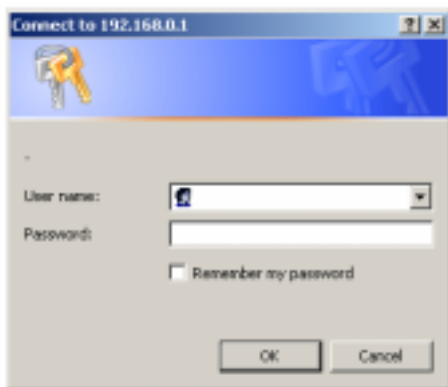
Step 1 | Access Network Setup

- 1.1. Connect the PC to your Modem using the CAT-5 Ethernet cable. Use ANY one of the Ethernet ports on your Modem.
- 1.2. If you have installed AxessManager, start AxessManager utility if it is not already active. From Main window, select Menu button. Refer to AxessManager Operational Guide for instructions if needed. If you have not installed AxessManager, refer to section "Configuring Ethernet Access" to



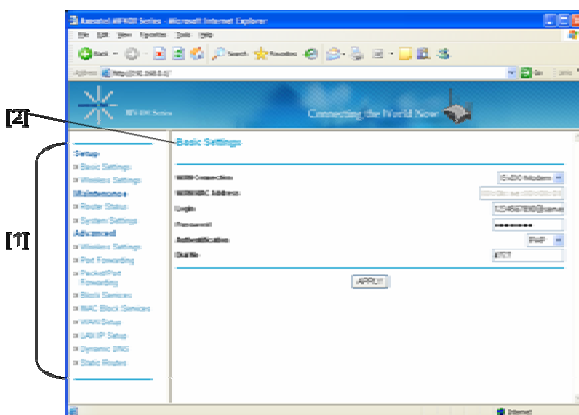
advance to step 2. Skip the rest of step 1.

- 1.3 From Menu window, select "Network" tab. A secondary pop up window will appear and ask you to enter User Name and Password.
- 1.4 Enter the User Name and Password then click "OK". The pop up window will change to a web-based window



Step 2 | Navigate web-based UI

- 2.1 The Basic Setting page is the first page you will see when you access the web based Advanced User Interface (UI). The basic setting page shows you a quick view of the Modem's login setting. All advanced setup pages can be reached from this page.





1. Quick Navigation Links

You can go directly to any of the Modem's UI pages by clicking directly on these links. The links are divided into logical categories and grouped by tabs to make finding a particular setting easier to find.

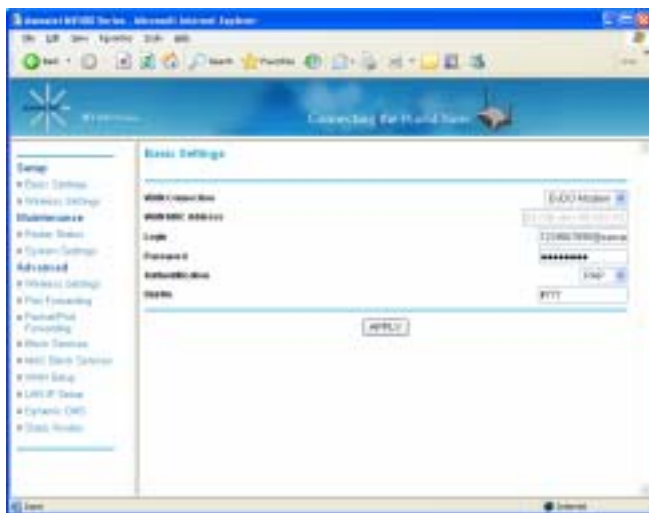
2. Page Name

The page you are on can be identified by this name. This User Manual will sometimes refer to pages by name. For instance "Advanced > LAN IP Setup" refers to the "LAN IP Setup" page.

Basic Settings

Clicking on the header of the "Basic Settings" tab will take you to the "Basic Settings" header page. From this page, the Modem's basic settings can be modified. These settings include:

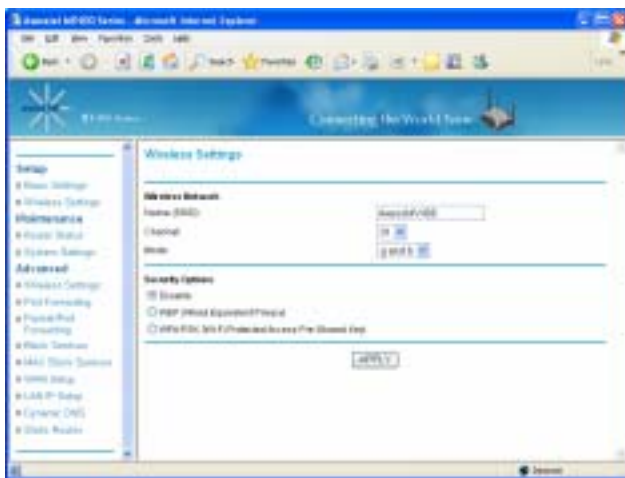
- WAN Connection. A drop down menu allows users to change the providers. The default value is EV-DO
- MAC Address
- Login ID and password
- Authentication Method. A drop down menu allows users to change the authentication method. The default value is PAP
- Dial No





Configuring the Wireless Network Settings

Clicking on the header of the “Wireless Settings” tab will take you to the “Wireless Settings” header page. From this page, the Modem’s Wi-Fi router wireless radio can be enabled or disabled (the default setting is enabled). There are options that allow you to make changes to the Wi-Fi wireless network settings.



Changing the Wireless Network Name (SSID)

To identify your wireless network, a name called the SSID (Service Set Identifier) is used. The default SSID of the Modem is “AxessMV400”. You can change this to anything you want to or you can leave it unchanged. If there are other wireless networks operating in your area, you will want to make sure that your SSID is unique (does not match that of another wireless network in the area). To change the SSID, type in the SSID that you want to use in the “SSID” field and click “Apply Changes”. The change is immediate. If you make a change to the SSID, your wireless-equipped computers may also need to be reconfigured to connect to your new network name. Refer to the documentation of your wireless network adapter for information on making this change.

Using the Wireless Mode Switch

Your Modem can operate in three different wireless modes: “g and b”, “g only”, and “b only”.



g and b Mode

In this mode, the Modem is compatible with 802.11b and 802.11g wireless clients simultaneously. This is the factory default mode and ensures successful operation with all Wi-Fi compatible devices. If you have a mix of 802.11b and 802.11g clients in your network, we recommend setting the Modem to g and b mode. This setting should only be changed if you have a specific reason to do so.

g only Mode

g only mode works with 802.11g clients only. This mode is recommended only if you want to prevent 802.11b clients from accessing your network. To switch modes, select the desired mode from the “Wireless Mode” drop-down box. Then, click “Apply Changes”.

b only Mode

We recommend you DO NOT use this mode unless you have a very specific reason to do so. This mode exists only to solve unique problems that may occur with some 802.11b client adapters and is NOT necessary for interoperability of 802.11g and 802.11b standards.

When to use b only Mode

In some cases, older 802.11b clients may not be compatible with 802.11g wireless. These adapters tend to be of inferior design and may use older drivers or technology. Switching to this mode can solve problems that sometimes occur with these clients. If you suspect that you are using a client adapter that falls into this category of adapters, first check with the adapter vendor to see if there is a driver update. If there is no driver update available, switching to b only mode may fix your problem. Please note that switching to b only mode will decrease 802.11g performance.

Changing the Wireless Channel

There are a number of operating channels you can choose from. In the United States and Australia, there are 11 channels. In the United Kingdom and most of Europe, there are 13 channels. In a small number of other countries, there are other channel requirements. Your Modem is configured to operate on the proper channels for the country you reside in. The default channel is 11 (unless you are in a country that does not allow channel 11). The channel can be changed if needed. If there are other wireless networks operating in your area, your network should be set to operate on a channel that is different than the other wireless networks. For best performance, use a channel that is at



least five channels away from the other wireless network. For instance, if another network is operating on channel 11, then set your network to channel 6 or below. To change the channel, select the channel from the drop-down list. Click “Apply Changes”. The change is immediate.

Securing your Wi-Fi® Network

Here are a few different ways you can maximize the security of your wireless network and protect your data from prying eyes and ears. This section is intended for the home, home office, and small office user. At the time of this User Manual’s publication, there are two encryption methods available.

WEP (Wired Equivalent Privacy)

WEP (Wired Equivalent Privacy) is a common protocol that adds security to all Wi-Fi compliant wireless products. WEP was designed to give wireless networks the equivalent level of privacy protection as a comparable wired network.

WPA (Wi-Fi Protected Access)

WPA (Wi-Fi Protected Access) is a new Wi-Fi standard that was designed to improve upon the security features of WEP. To use WPA security, the drivers and software of your wireless equipment must be upgraded to support WPA. These updates will be found on the wireless vendor’s website. There are two types of WPA security, WPA-PSK (no server) and WPA (with radius server).

WPA-PSK (no server) uses what is known as a pre-shared key as the network key. A network key is basically a password that is between eight and 63 characters long. It can be a combination of letters, numbers, or characters. Each client uses the same network key to access the network. Typically, this is the mode that will be used in a home environment.

Maintenance: Router Status

Clicking on the header of the “Router Status” tab will take you to the “Router Status” header page. A quick description of the functions can be found here.

1. IP Address

The “IP address” is the internal IP address of the Modem. The default IP address is “192.168.0.1”. To access the web based Advanced User Interface, type this IP address into the address bar of your browser. This address can be changed if needed.



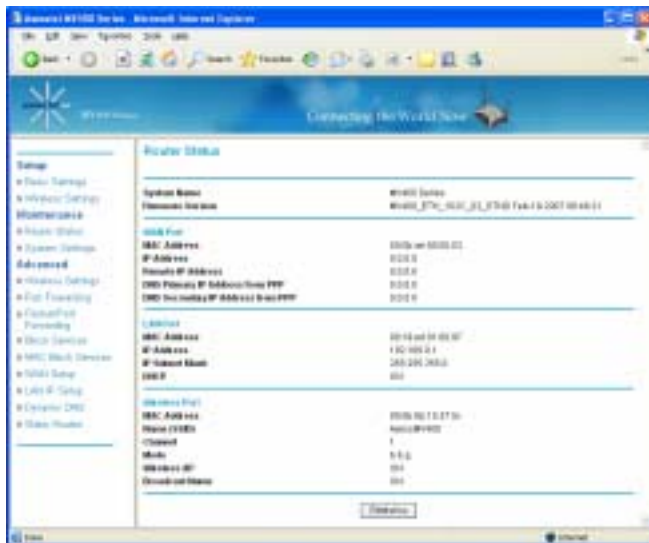
2. Subnet Mask

This is a unique, advanced feature of your Axisstel Modem. It is possible to change the subnet mask if necessary; however, do NOT make changes to the subnet mask unless you have a specific reason to do so. The default setting is “255.255.255.0”.

From this page, users can see all settings associated with the Modem’s router network functions. These functions include:

- Account Name and Firmware Version
- WAN Port: MAC Address, IP Address, DHCP choice, IP Subnet Mask and Domain Name Server Address
- LAN Port: MAC Address, IP Address, DHCP choice and IP Subnet Mask
- Wi-Fi Port: SSID, Region, Channel, Mode, Wireless AP status (ON/OFF) and Broadcast Name status (ON/OFF)

Users can click the button “Show Statistic” to see a graphic display of the router performance.





Maintenance: Attached Devices

Clicking on the header of the “Attached Devices” tab will take you to its header page. A quick description of the functions can be found here.

Maintenance: Backup Settings

Clicking on the header of the “Backup Settings” tab will take you to its header page. Using this option will restore all of the settings in the Router to the factory (default) settings. It is recommended that you back up your settings before you restore all of the defaults.

To revert to factory default settings, click on the button “Erase”.

Restoring the defaults includes restarting the Modem. It can take up to 25 seconds. It is important not to turn the power to the Modem off during the restart. A 25-second countdown will appear on the screen. When the countdown reaches zero, the Modem’s defaults will be restored.

Set Password

Clicking on the header of the “Set Password” tab will take you to its header page. A quick description of the functions can be found here.

Router Upgrade

Clicking on the header of the “Router Upgrade” tab will take you to its header page. From time to time, Axisstel may release new versions of the Modem’s firmware. Firmware updates contain feature improvements and fixes to problems that may exist. When Axisstel releases new firmware, you can obtain it from your Service Provider and update your Modem’s firmware to the latest version.

To upgrade the Modem, you need to first tell AxesManager where to find the new firmware. Click the Browse button. A window will open that allows you to select the location of the firmware update file. Browse to the firmware file you downloaded. Select the file by double-clicking on the file name.

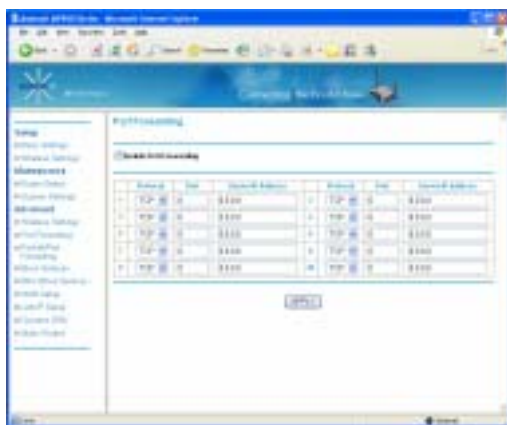
Note: We suggest saving this to your desktop to make it easy to locate the file.

The Modem may not respond for as long as one minute as the firmware is loaded into the Modem and the modem is rebooted.



Configuring Port Forwarding

Clicking on the header of the “Port Forwarding” tab will take you to the “Port Forwarding” header page. This function will allow you to route external (Internet) calls for services such as a web server (port 80), FTP server (Port 21), or other applications through your Router to your internal network. Since your internal computers are protected by a firewall, computers outside your network (over the Internet) cannot get to them because they cannot be “seen.” A list of common applications has been provided in case you need to configure the “Port Forwarding” function for a specific application. You will need to contact the application vendor to find out which port settings you need.



Note: This advanced feature should be employed by advanced users only.

Disable Port Forwarding

To disable Port Forwarding, check the box “Disable Port Forwarding”.

Entering Settings into the Port Forwarding

To enter settings, select the service from the dropdown box “Service Name”. You will see a list of common applications (FTP, HTTP, Net-Meeting...). Select the desired application enter the IP address in the space provided for the internal (server) machine and click “Add”. In the pop up screen, enter the port(s) required to pass, select the port type (TCP or UDP), and click “Apply Changes”. Each inbound port entry has two fields with five characters maximum per field that allows a start and end port range, e.g. [xxxxx]-[xxxxx]. For each entry, you



can enter a single port value by filling in the two fields with the same value (e.g. [7500]-[7500]) or a wide range of ports (e.g. [7500]-[9000]). If you need multiple single port values or a combination of ranges and a single value, you must use multiple entries up to the maximum of 20 entries (e.g. 1. [7500]-[7500], 2. [8023]-[8023], 3. [9000]-[9000]). You can only pass one port per internal IP address. Opening ports in your firewall can pose a security risk. You can enable and disable settings very quickly. It is recommended that you disable the settings when you are not using a specific application.

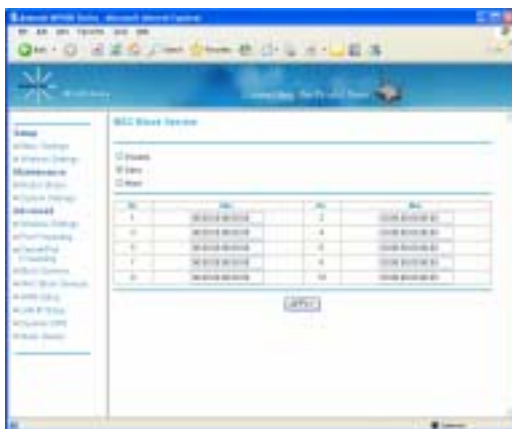
Block Services

The Modem can be configured to restrict access to the Internet, email, or other network services at specific days and times. Restriction can be set for a single computer, a range of computers, or multiple computers.

To restrict Internet access to a single computer, for example, enter the IP address of the computer you wish to restrict access to in the IP fields. Next, enter “80” in both the port fields. Select “Block”.

MAC Block Services

The MAC address filter is a powerful security feature that allows you to specify which computers are allowed on the network. Any computer attempting to access the network that is not specified in the filter list will be denied access. When you enable this feature, you must enter the MAC address of each client (computer) on your network to allow network access to each.





MAC Services Blocking can be set in three modes.

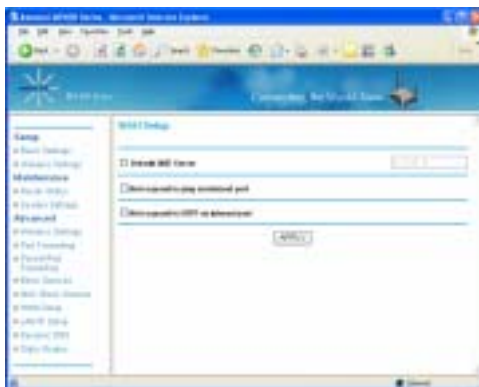
- **Disable.** In this mode, there is no restriction to any device connected to the Modem whether it is through Wi-Fi or Ethernet ports.
- **Deny.** In this mode, the service table shows the client MAC address being blocked by the Modem.
- **Allow.** In this mode, the service table shows the client MAC address allowed by the Modem.

To modify the service table (i.e. to add, change address or remove clients), there are three buttons underneath the service table: Add, Edit and Delete. Using these buttons together with the mode selection, users can manage the MAC address filtering process.

Note: You will not be able to delete the MAC address of the computer you are using to access the Router's administrative functions (the computer you are using now).

WAN Setup

Clicking on the header of the “WAN Setup” tab will take you to the “WAN Setup” header page. From this page, the Modem's DMZ, Internet Ping and HTTP can be enabled or disabled.



Enabling the Demilitarized Zone (DMZ)

The DMZ feature allows you to specify one computer on your network to be placed outside of the firewall. This may be necessary if the firewall is causing



1. IP Address: The “IP address” is the internal IP address of the Modem. The default IP address is “192.168.2.1”. To access the Web Manager User Interface, type this IP address into the address bar of your browser. This address can be changed if needed. To change the IP address, type in the new IP address and click “Apply”. The IP address you choose should be a non-routable IP.

Examples of a non-routable IP are:

192.168.x.x (where x is anything between 0 and 255), and

10.x.x.x (where x is anything between 0 and 255).

2. Subnet Mask: There is no need to change the subnet mask. This is a unique, advanced feature of your Modem. It is possible to change the subnet mask if necessary; however, do NOT make changes to the subnet mask unless you have a specific reason to do so. The default setting is “255.255.255.0”.

Use Router as DHCP Server

The DHCP server function makes setting up a network very easy by assigning IP addresses to each computer on the network automatically. The DHCP server can be turned OFF if necessary; however, in order to do so you must manually set a static IP address for each computer on your network. To turn off the DHCP server, de-select “Use Router As DHCP Server” and click “Apply”.

Static Route

A static IP address connection type is less common than other connection types. If your ISP uses static IP addressing, you will need your IP address, subnet mask, and ISP gateway address. This information is available from your ISP or on the paperwork that your ISP left with you. Type in your information, and click “Apply”.

1. IP Address: Provided by your ISP. Enter your IP address here.

2. Subnet Mask: Provided by your ISP. Enter your subnet mask here.

3. ISP Gateway Address: Provided by your ISP. Enter the ISP gateway address here.



Troubleshooting

Problem:

Installation CD does not automatically start.

Solution:

If the CD-ROM does not start the Install software automatically, it could be that the computer is running other applications that are interfering with the CD drive.

1. If the Install screen does not appear within 15—20 seconds, open up your CD-ROM drive by double-clicking on the “My Computer” icon that is located on your desktop.
2. Next, double-click on the CD-ROM drive that the Install Software CD has been placed in to start the installation.
3. The Install should start within a few seconds. If, instead, a window appears showing the files on the CD, double-click on the icon labeled “EasyInstall.exe”.

Problem:

- The Install software completed installation, but my web browser doesn't work.
- I am unable to connect to the Internet. The Modem's “Signal” light is on and the “Connect” light is off.

Solution:

If you cannot connect to the Internet, the “Signal” light is on, and the “Connect” light is off, the problem may be your connection type may not match the ISP's connection.

- If you have a “static IP address” connection, your ISP must assign you the IP address, subnet mask, and gateway address. Please refer to the section entitled “Alternate Setup Method” for details on changing this setting.



- If you are still unable to access the Internet after verifying these settings, please contact your Service Provider Technical Support.

Problem:

- The Install software completed installation, but my web browser doesn't work.
- I am unable to connect to the Internet. The Modem's "Signal" light is on and the "Connect" light is on.

Solution:

If the "Signal" light is on, and the "Connect" light is on, but you are unable to access the Internet, there may be third-party firewall software installed on the computer attempting to access the Internet. Examples of third-party firewall software are ZoneAlarm, BlackICE PC Protection, McAfee Personal Firewall, and Norton Personal Firewall.

If you do have firewall software installed on your computer, please make sure that you properly configure it. You can determine if the firewall software is preventing Internet access by temporarily turning it off. If, while the firewall is disabled and Internet access works properly, you will need to change the firewall settings to function properly when it is turned on.

Please refer to the instructions provided by the publisher of your firewall software for instructions on configuring the firewall to allow Internet access.

If you are still unable to access the Internet after disabling any firewall software, please contact your Service Provider Technical Support.

Problem:

I can't connect to the Internet wirelessly from my computer but it works if I use the Ethernet cable.

Solution:

If you are unable to connect to the Internet from a wireless computer, please do the following:

1. Look at the lights on your Modem. Your Modem's lights should be as follows:
 - The "Power" light should be on.



- The “Connected” light should be on and not blinking.
 - The “WAN” light should be either on or blinking.
2. Open your wireless utility software by clicking on the icon in the system tray at the bottom, right-hand corner of the screen.
 3. The exact window that opens will vary depending on the model of wireless card you have; however, any of the utilities should have a list of “Available Networks”—those wireless networks it can connect to.

Problem:

My wireless network performance is inconsistent.

Data transfer is sometimes slow.

Signal strength is poor.

I am having difficulty establishing and/or maintaining a Virtual Private Network (VPN) connection.

Solution:

Wireless technology is radio-based, which means connectivity and the throughput performance between devices decreases when the distance between devices increases. Other factors that will cause signal degradation (metal is generally the worst culprit) are obstructions such as walls and metal appliances. As a result, the typical indoor range of your wireless devices will be between 100 to 200 feet. Note also that connection speed may decrease as you move farther away from the Modem or access point.

In order to determine if wireless issues are related to range, we suggest temporarily moving the computer, if possible, five to 10 feet away from the Modem.

Changing the Wireless Channel - Depending on local wireless traffic and interference, switching the wireless channel of your network can improve performance and reliability. The default channel the Modem is shipped with is channel 11. You may choose from several other channels depending on your region (see the section titled “Changing the Wireless Channel” on page 41 for instructions on how to choose other channels).

Limiting the Wireless Transmit Rate - Limiting the wireless transmit rate can help improve the maximum wireless range and connection stability. Most wireless cards have the ability to limit the transmission rate. To change this property, go to the Windows Control Panel, open “Network Connections”



and double-click on your wireless card's connection. In the "Properties" dialog, select the "Configure" button on the "General" tab (Windows 98 users will have to select the wireless card in the list box and then click "Properties"), then choose the "Advanced" tab and select the rate property. Wireless client cards are usually set to automatically adjust the wireless transmit rate for you, but doing so can cause periodic disconnects when the wireless signal is too weak; as a rule, slower transmission rates are more stable.

Experiment with different connection rates until you find the best one for your environment; note that all available transmission rates should be acceptable for browsing the Internet. For more assistance, see your wireless card's user manual.



Technical Specifications

This chapter provides technical product data for the Modem.

Radio frequency and electrical specifications

Frequency Range	MV410	Rx: 463 ~ 468 MHz Tx: 453 ~ 458 MHz
Frequency Range	MV420 & MV440	Rx: 859.64 ~ 893.37 MHz Tx: 824.64 ~ 848.37 MHz
Frequency Range	MV430 & MV440	Rx: 1930 ~ 1989.95 MHz Tx: 1850 ~ 1909.95 MHz
Channel Bandwidth		CDMA 1.25 MHz
Stability of frequency		0.4 ppm
External appearance (mm)		160 x 178 x 40 mm
Weight		600 g (with battery)
Sending output		maximum 0.23W E.R.P
Temperature of operation		-40 ~ +80 degrees Celsius
Relative humidity		5% ~ 90%
Adapter		Input: AC 110~240V 50~60Hz Output: DC 12V/2A
Battery	Standby	24 hours
	Operation	2.5 Hrs



Appendix A: Glossary

- 1X** One Times Radio Transmission Technology (the “one times” refers to the frequency spectrum). Supports Internet connections with data rates up to 153 Kbps. Actual speed depends on the network conditions. Compare to 1x EV-DO.
- 1x-EVDO** A high speed standard for cellular packet data communications
- Rev. A supports Internet connections with data rates up to 3.1 Mbps (downlink from the network) and 1.8 Mbps (uplink to the network).
- Rev. 0 supports Internet connections with data rates up to 2.4 Mbps (downlink from the network) and 153 Kbps (uplink to the network).
- Average data rates are roughly: for Rev. A: 600–1300 Kbps (downlink from the network) and 300–400 Kbps (uplink to the network); for Rev. 0: 400–700 Kbps (downlink from the network) and 40–80 Kbps (uplink to the network).
- Actual speed depends on the network conditions. Compare to 1X.
- bps** bits per second—The actual data speed over the transmission medium.
- CDMA** Code Division Multiple Access—A wideband spread spectrum technique used in digital cellular, personal communications services, and other wireless networks. Wide channels (1.25 MHz) are obtained through spread spectrum transmissions, thus allowing many active users to share the same channel. Each user is assigned a unique digital code, which differentiates the individual conversations on the same channel.
- CDMA 1X** Also known as 1X, this is a high speed standard for CDMA cellular communications.
- dormant** The packet data connection has the logical PPP session left open while the underlying physical link (the radio channel) is released. When traffic is to resume, a radio channel is reacquired and the original PPP session resumes.



ESN	Electronic Serial Number—The unique first generation serial number assigned to the Modem for cellular network use. Compare to MEID.
FCC	Federal Communications Commission. The U.S. federal agency that is responsible for interstate and foreign communications. The FCC regulates commercial and private radio spectrum management, sets rates for communications services, determines standards for equipment, and controls broadcast licensing. Consult www.fcc.gov .
firmware	Software stored in ROM or EEPROM; essential programs that remain even when the system is turned off. Firmware is easier to change than hardware but more permanent than software stored on disk.
host	<ol style="list-style-type: none">1. A computer that uses a modem or a similar device to answer a calling computer.2. A source or destination in the communication network.3. A computer that contains data or files to be accessed by client computers. Also known as a server.
IS	Interim Standard—After receiving industry consensus, the TIA forwards the standard to ANSI for approval.
IS-95	The standard for CDMA
Kbps	Kilobits per second—Actually 1000, not 1024, as used in computer memory size measurements of kilobytes.
LAN	Local Area Network
LED	Light Emitting Diode—A semiconductor diode that emits visible or infrared light.
MEID	Mobile Equipment Identifier—The unique second-generation serial number assigned to the Modem for cellular network use. Compare to ESN.
MHz	Mega Hertz—One million cycles per second.
Mbps	Megabits per second
packet	A short fixed-length block of data including a header that is



transmitted as a unit in a communications network.

- PCS Personal Communications Services—A cellular communication infrastructure that uses a different frequency range than AMPS.
- roaming A cellular subscriber is in an area where service is obtained from a cellular service provider that is not the subscriber's provider.
- SMS Short message services—A feature that allows users of a wireless device on a wireless network to receive or transmit short electronic alphanumeric messages (up to 160 characters, depending on the service provider).
- system tray Usually located in the lower right corner of your screen
- TIA Telecommunications Industry Association—A standards-setting trade organization, whose members provide communications and information technology products, systems, distribution services and professional services in the United States and around the world. Consult www.tiaonline.org.
- VPN Virtual Private Network

